



ARROWQUIP

Q-POWER 106 SERIES HYDRAULIC SQUEEZE CRUSH

PRODUCT MANUAL

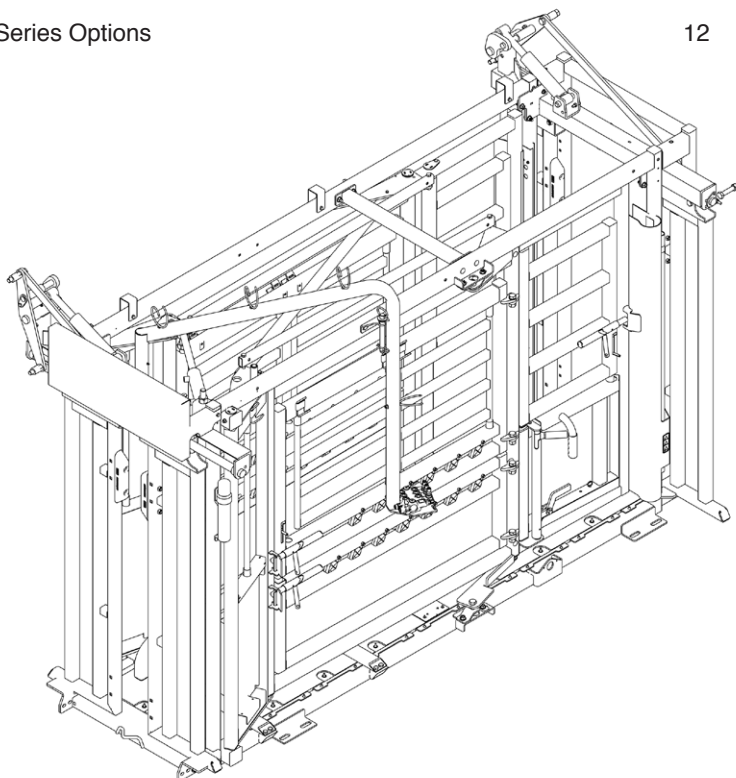
1800 814 107

sales.au@arrowfarmquip.com

arrowquip.com.au

CONTENTS

| | |
|---------------------------------------------------------------|----|
| General Description of the Q-Power 106 Series Hydraulic Crush | 1 |
| Safety Precautions | 1 |
| Risk Assessment | 3 |
| Q-Power 106 Series Hydraulic Crush Assembly | 4 |
| Power Failure | 6 |
| Operating the Head Bail | 7 |
| Operating the Split Gate Vet Cage | 8 |
| Recommended Maintenance | 9 |
| Cold Start | 10 |
| Warranty | 10 |
| Troubleshooting Guide | 11 |
| Q-Power 106 Series Options | 12 |



PLEASE FOLLOW ALL SAFETY INSTRUCTIONS PROVIDED IN THIS MANUAL BEFORE OPERATION. ARROWQUIP DOES NOT ACCEPT RESPONSIBILITY FOR ANY ACCIDENTS OR INJURY WHEN THIS SAFETY MANUAL HAS NOT BEEN READ IN FULL AND KEPT WITH THE PRODUCT AT ALL TIMES. OPERATORS OF THIS PRODUCT TAKE AND ACCEPT RESPONSIBILITY FOR ANY HARM OR INJURY TO THE ANIMAL OR OPERATOR WHEN IT PERTAINS TO HOW THE EQUIPMENT IS USED AND MAINTAINED.

Please keep this manual for frequent reference and to pass on to new users or owners.

GENERAL DESCRIPTION OF THE Q-POWER 106 SERIES HYDRAULIC CRUSH

Arrowquip's Q-Power 106 Hydraulic Crush was designed with cow-calf operation in mind. It is a versatile cattle crush that has been developed and extensively tested to deliver increased productivity.

Our team of engineers have designed the 106 Series crush to follow correct cattle handling principles. This hydraulic crush emerges from the most innovative range of Arrowquip's products. We have taken the time to ensure that you have the right equipment to make your farm operate at maximum efficiency, resulting in higher profits, and allowing you more time to do the things that truly matter.

SAFETY PRECAUTIONS

PLEASE FOLLOW ALL SAFETY PRECAUTIONS OUTLINED HEREIN. ANY HARM TO THE ANIMAL OR INJURY TO THE OPERATOR WHICH OCCURS DUE TO HOW THE PRODUCT IS OPERATED, OR RESULTING FROM A LACK OF SAFETY PRECAUTIONS ARE THE SOLE RESPONSIBILITY OF THE OPERATOR.

All farm machinery and equipment is potentially dangerous. Careless use of any Arrowquip livestock equipment may cause injury or damage to persons, cattle, or property. Arrowquip has taken precautions in the design and manufacturing of

this product to ensure that it is safe and user-friendly. Therefore, the user must assume all responsibility and risk associated with the possession and use of the cattle crush.



WARNING: READ BELOW BEFORE OPERATION.

Ensure the operator understands the contents of this manual before using the cattle crush.

1. Do not wear loose-fitted clothing.
2. Ensure the cattle crush is on a firm, level, dry surface that is free of rocks and other trip hazards. A level concrete pad flush with the ground and with the crush bolted to the concrete is strongly recommended.
3. Do not enter the vet cage until the animal is secured in the head bail and the rump bar has been placed so that the cow cannot back up.
4. Do not stand in front of the head bail while operator is moving the cattle through the crush.
5. DO NOT ALLOW CHILDREN UNDER THE AGE OF 18 NEAR AN OPERATING MACHINE.
6. Follow safe cattle handling procedures in other areas of the yard so that cattle are more docile in the crush.
7. Do not make any modifications to Arrowquip equipment. Non-factory modifications to the equipment can reduce the safety for the operator and livestock.
8. DO NOT ALLOW CHILDREN UNDER THE AGE OF 18 TO USE THE HYDRAULIC EQUIPMENT.
9. Do not operate hydraulics while operators are working with the cattle in the crush or are touching the crush. Reaching out or into the crush while hydraulics are in operation can result in serious injury.

10. Please ensure that all hydraulic hoses and electrical leads are out of the way and safely positioned before moving cattle or using the crush.
11. Keep a distance of more than an arm's length from the hydraulic crush while hydraulics are in operation.

RISK ASSESSMENT

Conduct a risk assessment on procedures regarding the operation of an Arrowquip hydraulic crush, establishing a safe work procedure.

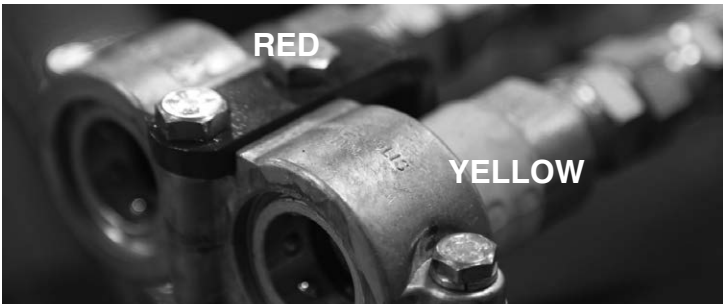
1. Ensure all users of the equipment have been inducted and comply with safe working procedures.
2. Please ensure that the hydraulic crush is secured on firm ground.
3. Please ensure that there are no hazardous hydraulic cords or large objects within or around the crush where cattle and operator will be.
4. Please ensure that all hydraulics work properly before putting cattle through the crush.
5. Please make sure that all hydraulic hoses are properly secured to the hydraulic pump or tractor.
6. Ensure that the hydraulic controls are functioning properly. Specifically ensure that the adjustable side mechanism and the head bail are adjusting smoothly.
7. If hydraulics do not function properly when testing the equipment, DO NOT put cattle through the crush.
8. Ensure that access gates are closed securely before running cattle through the crush.
9. Some chemicals and medicines can damage powder coat. Take all precautions and wash after use.
10. Make sure your crush has been cleared of ALL livestock after use.

Q-POWER 106 SERIES HYDRAULIC CRUSH ASSEMBLY

Your crush will come fully assembled with the options you have ordered already fitted to the crush. However, it will be necessary to connect the hydraulics to a tractor or powerpack. The following guide will assist you in properly setting up your crush for use.

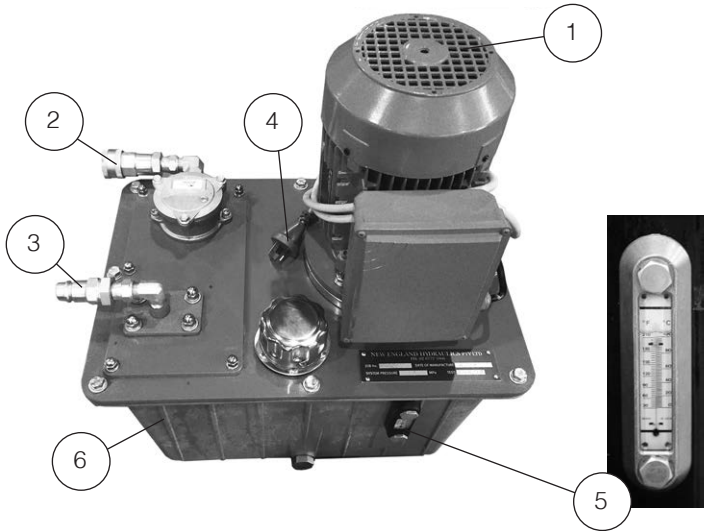
A. SETTING UP HYDRAULIC CATTLE CRUSH

1. Hydraulics are plug and play. Please ensure that the color code of the hoses matches to the quick connects. Rule of thumb: red is pressure, yellow is tank.
2. When hooking up the hoses, ensure the couplers are engaged and the female sleeve is snapped into place.
3. Ensure the tank hose is hooked into the tank ports at both ends, and the hose for pressure is hooked into the same parts as both ends.



B. ELECTRIC POWER PACK

DO NOT ATTEMPT TO CONNECT THE ELECTRIC POWER PACK IF YOU ARE NOT A CERTIFIED ELECTRICIAN. For your safety, electric power packs must be connected and wired by a certified electrician.

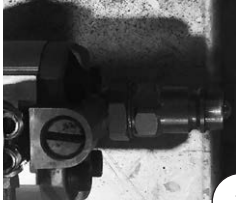


- 1. 5 HP ENGINE
- 2. RETURN SIDE
- 3. PRESSURE SIDE
- 4. 240V PLUG
- 5. FILL LINE
- 6. 10-GALLON RESEVOIR

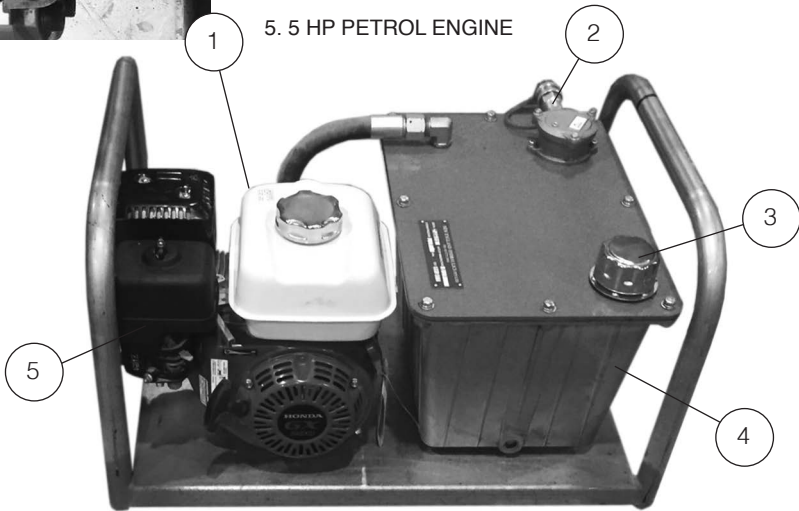


DO NOT CONNECT MOTOR TO POWER SOURCE WITHOUT CONNECTING PRESSURE AND TANK HOSES TO UNIT. SEVERE DAMAGE MAY OCCUR.

C. PETROL POWER PACK



1. PRESSURE CONNECTION POINT
2. RETURN
3. FILLER CAP
4. 10-GALLON RESERVOIR
5. 5 HP PETROL ENGINE



DO NOT START PETROL ENGINE WITHOUT CONNECTING PRESSURE AND TANK HOSES TO UNIT. SEVERE DAMAGE MAY OCCUR.

POWER FAILURE

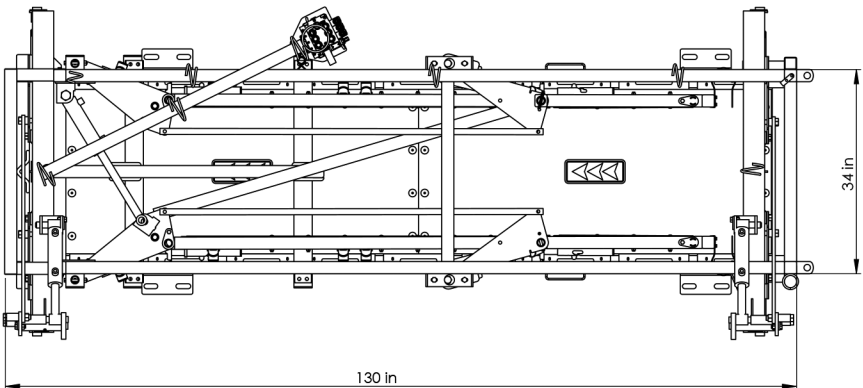
PLEASE READ BELOW IN CASE OF POWER FAILURE

If you should experience a loss of power while you have an animal in the crush, please follow the below instructions:

1. Disconnect the hydraulic hoses from the power unit.
2. Operate the hydraulic levers to allow fluid to flow out of the cylinders and release the pressure on the animal.
3. Check to make sure that the animal is free of any injury.

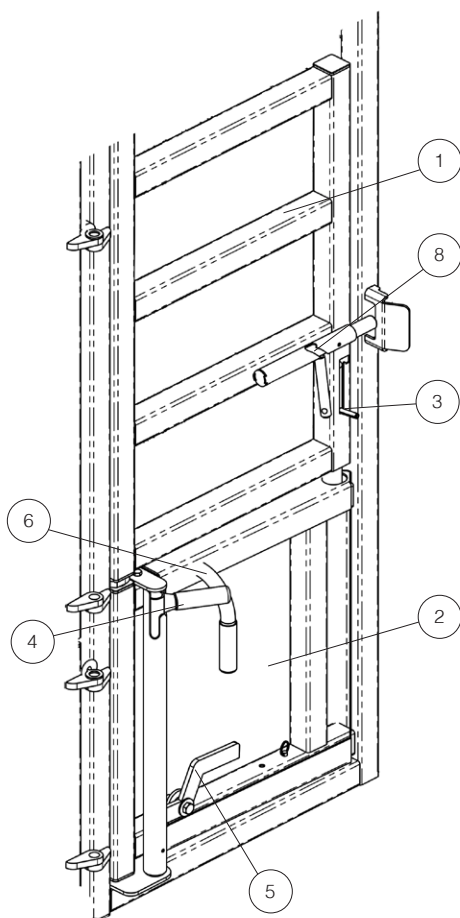
OPERATION OF HEAD BAIL

1. Ensure all gates and the head bail are closed before the animal enters the crush.
2. Open rear gate for the animal to enter the squeeze crush enclosure.
3. Close rear gate.
4. Open head bail slightly more than the neck size of the animal to tempt the animal to stick its head through the head bail. When neck of animal is in the correct position, quickly close the head bail securely on the animal's neck.
5. If required, side squeeze animal and engage head restraint to restrain further movement.
6. If the animal applies excessive pulling pressure on head bail, it is recommended to use the anti-backing bar behind cattle rump.
7. Confirm animal is securely held before carrying out any husbandry work.

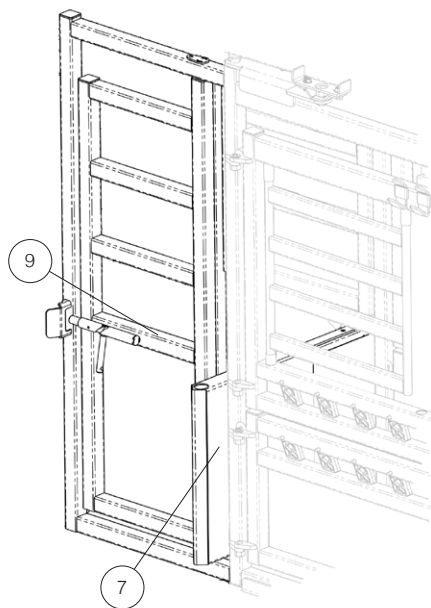


OPERATING THE SPLIT GATE VET CAGE

DELUXE VET MODEL ONLY



1. TOP SPLIT GATE
2. BOTTOM SPLIT GATE
3. SPLIT DOOR DROP PIN
4. SPLIT GATE HANDLE
5. FOOT PEDAL
6. EXTENDER HANDLE
7. BOTTOM GATE EXTENSION
8. SLAM LATCH
9. VET CAGE DOOR
(OPPOSITE SIDE)



1. Ensure the animal is caught securely in the head bail, and rump bar is in place, if necessary.
2. Lift split door drop pin and secure in upright position.
3. Lift split gate handle by hand or with foot pedal.
4. Push bottom split gate to the inside of the crush until you hear a click which confirms the gate is locked in place.
5. Push extender handle until bottom gate extension is secured into the slot on the opposite side of the crush.
6. If necessary, side squeeze animal.
7. Confirm animal is securely held before carrying out any husbandry work.

RECOMMENDED MAINTENANCE

Arrowquip squeeze crushes are made with precision parts and require little maintenance as a result. However, regular maintenance is required to keep your crush running smoothly and safely.

A. MAINTENANCE

1. Grease cylinders and zerks on a regular basis.
2. Lubricate slam latches, lube bolts, door hinges regularly with WD-40. Recommended every six months, minimum.
3. Clean bottom head gate door track to prevent dirt build-up.
4. Check mechanism pivot bolts for wear and lubricate or replace, as necessary.
5. Clean and lubricate main locking shaft doors regularly.
6. Inspect for signs of mechanical damage regularly, specifically to gate latches and striker plates, and ensure gates are locking securely.

B. MAINTENANCE SAFETY

1. Please be sure the area is clear of bystanders, especially children, when doing any maintenance or repair on the hydraulic crush.

2. Keep all body parts, including hair, hands, feet, etc., away from the machine when hydraulics are in operation.
3. Before carrying out any maintenance on the crush, please ensure there are no livestock in the crush.
4. Please DO NOT repair the crush or go into the crush when hydraulics are in operation. This can result in injury to the worker.

COLD START

When locked in the up position, the cold start allows the oil to circulate within the power pack to warm the oil, allowing for faster flow rate to the crush.

When locked in the down position, it is engaged to run the crush.

WARRANTY

Your product must be registered to claim warranty, and to ensure that Arrowquip has the required information to contact you in the event of a product or part recall. If the owner of the equipment fails to register the product with Arrowquip, they are considered to have voluntarily voided the warranty.

NOTE: Any modification, in any fashion, to any Arrowquip equipment immediately voids the product warranty. This includes the parts contained therein.

E.g. If a modification is made to the squeeze mechanism in a crush, and the sternum bar is bent afterwards, warranty for the damaged part, the sternum bar, contained in the modified equipment, the crush, is void. In addition, any remaining warranty for the crush and other parts contained therein, including, but not limited to, the head bail, locking system, Q-Catch system, and rollers, is null and void.

REGISTER FOR WARRANTY NOW:

Online: arrowquip.com.au/product-registration

Phone: 1800 814 107 | **Email:** sales.au@arrowfarmquip.com

TROUBLESHOOTING GUIDE

If you have a problem with your Q-Power crush, please consider the following pointers or call us at 1800 814 107.

1. To ensure proper operation make sure head bail is situated on level ground or base.
2. Make sure head bail door tracks are free of debris.
3. Keep floors clean. Excess build-up of manure or dirt inside crush can cause the squeeze and head bail to malfunction.

Other Problems

**START CORD ON PETROL POWER PACK MOTOR VERY HARD TO PULL.
SEEMS LIKE PRESSURE BUILD-UP.**

SOLUTIONS:

1. It is possible the motor has been turned on its side at some point, causing oil to get on top of the cylinder. Remove spark plug, hold a rag over spark plug hole, and pull the start cord a couple of times to get rid of the oil. Clean and dry out spark plug hole, then check engine oil. Note: Engine will smoke at first as it burns off the oil.
2. Reconnect hoses which may not be connected properly.

PUMP IS NOT BUILDING PRESSURE.

SOLUTIONS:

1. Try screwing relief on the valve all the way in and then back out. Keep track of turns.
2. Check that the oil level is correct in the sight glass.
3. Make sure that both couplers are engaged, and the female sleeve is snapped into place.
4. Ensure fan on motor is turning clockwise.
5. If the cold start valve is stuck in the open/up position, turn the valve one quarter turn and pin should slide down deeper.

6. If it sounds like the motor is not laboring, there is a very small possibility that the key on the shaft broke, and it is not turning the pump.
7. If the relief valve has a piece of debris in it, turning the valve in and out it should free it and cause it to by-pass.
8. Make sure hoses are hooked up correctly and align with the P and T on both the power pack and the crush.
 - a. Note: 'P' is left and 'T' is right.

Q-POWER 106 SERIES OPTIONS

Q-CATCH HEAD HOLDER

A simple yet highly effective addition, the head holder is a sturdy mechanism that clamps around the animal's neck and holds the head immobile to allow the handler up-close access to the animal safely.

Installation:

1. Rest head holder on the bottom 38mm spacer on working side of head bail.
2. Install 13mm x 89mm bolts through face of head holder and install large washers on back of head bail doors, then tighten bolts.

Safety Precautions:

1. Ensure that the head holder remains open until required to hold the animal's head.

CRUSH TRAILER

Refer to Crush Trailer manual.

STERNUM BAR

The purpose of the sternum bar is to keep the cattle from going down in the crush. The sternum bar can be easily installed and removed with a single bolt.

Installation:

1. Insert long sternum bar tube into rear bracket on floor of crush.
2. Insert short sternum bar support into long sternum bar tube receiver, and insert bottom shoe plate into front bracket on the floor of crush.
3. Tighten all jam bolts.

Safety Precautions:

1. Please ensure that the Sternum Bar is installed correctly before running cattle through the crush.

LUG POSTS

The Lug Posts allow you to connect your crush to a draft module, baulk gate, or panels in your stockyard which may extend beyond the crush.

Installation:

1. Bolt bottom posts under the Head Bail Door



2. Remove bolts and nuts on name plate.

3. Secure top posts in the same slot as the name plate using longer bolts. 3" Bolts recommended.

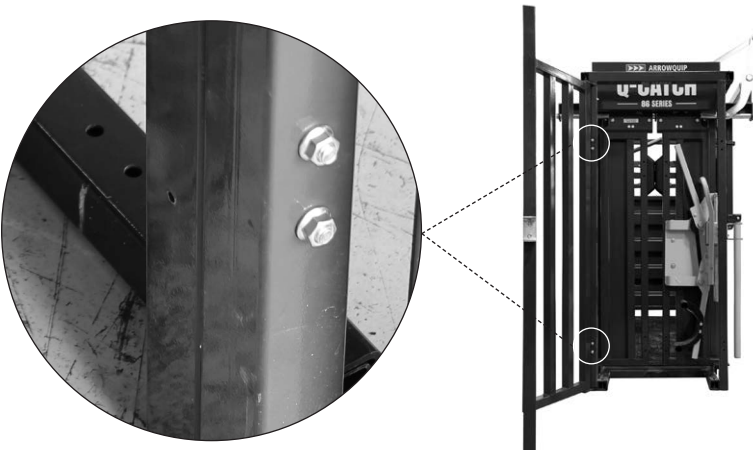


BAULK GATE

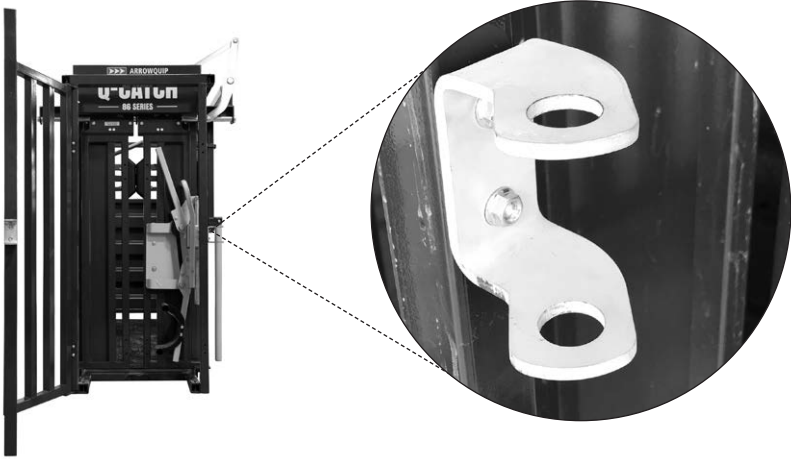
The Baulk Gate is an effective way to calm and slow down temperamental animals, ensuring they are caught in the head bail correctly.

Installation:

1. Install Lug Posts. See above installation instructions.
2. Remove existing Double Lugs on Lug Posts.
3. Connect Baulk Gate to Lug Posts with bolts. The Baulk Gate can be installed on either side.



4. Place the 45° Double Lug on the outer edge of the Lug Post, opposite the side where the Bulk Gate is bolted.



Note: Installing the Bulk Gate will require **two people**.



ARROWQUIP

1800 814 107 | sales.au@arrowfarmquip.com | arrowquip.com.au