

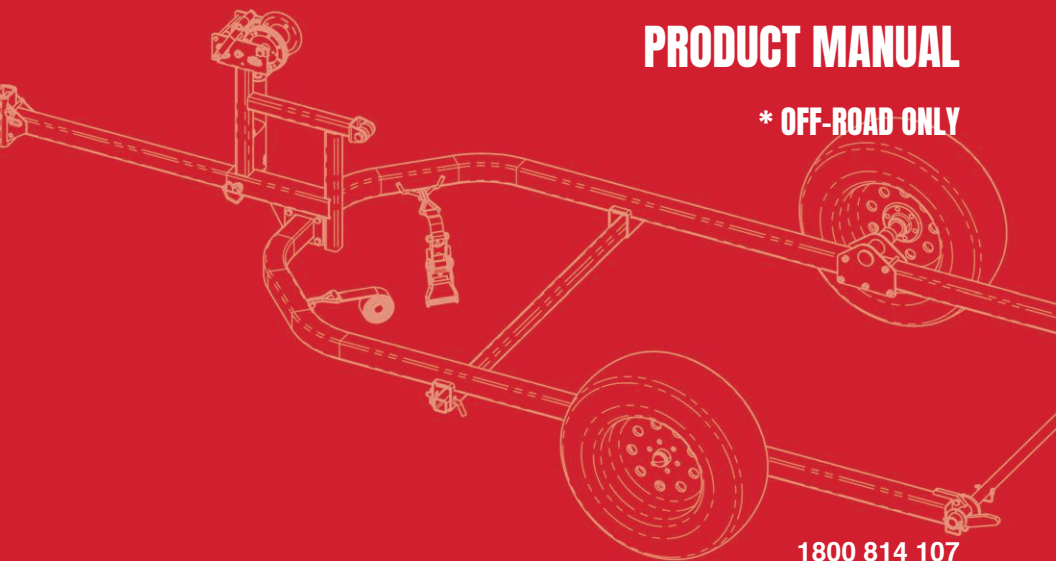


**ARROWQUIP**

# CRUSH TRAILER

**PRODUCT MANUAL**

**\* OFF-ROAD ONLY**



**1800 814 107**

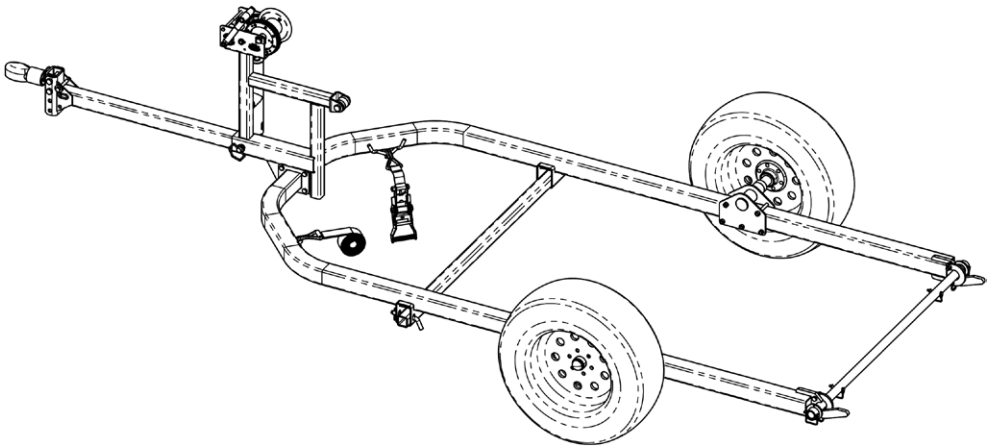
**[sales.au@arrowfarmquip.com](mailto:sales.au@arrowfarmquip.com)**

**[arrowquip.com.au](http://arrowquip.com.au)**



# CONTENTS

General Description of the Crush Trailer	1
Safety Precautions	1
Risk Assessment	2
Operating the Crush Trailer	3
Trailer Wheel Maintenance	3
Assembly of the Crush Trailer	5
Warranty	11
Troubleshooting Guide	12



**PLEASE FOLLOW ALL SAFETY INSTRUCTIONS PROVIDED IN THIS MANUAL BEFORE OPERATION. ARROWQUIP DOES NOT ACCEPT RESPONSIBILITY FOR ANY ACCIDENTS OR INJURY WHEN THIS SAFETY MANUAL HAS NOT BEEN READ IN FULL AND KEPT WITH THE PRODUCT AT ALL TIMES. OPERATORS OF THIS PRODUCT TAKE AND ACCEPT RESPONSIBILITY FOR ANY HARM OR INJURY TO THE ANIMAL OR OPERATOR WHEN IT PERTAINS TO HOW THE EQUIPMENT IS USED AND MAINTAINED.**

Please keep this manual for frequent reference and to pass on to new users or owners.

## **General Description of the Crush Trailer**

The Crush Trailer is specifically designed for the Arrowquip lineup of cattle crushes. The trailer makes it easy to load and move your cattle crush between multiple locations, simplifying your everyday life.

## **Safety Precautions**

**PLEASE FOLLOW ALL SAFETY PRECAUTIONS OUTLINED HEREIN. ANY HARM TO THE ANIMAL OR INJURY TO THE OPERATOR WHICH OCCURS DUE TO HOW THE PRODUCT IS OPERATED, OR RESULTING FROM A LACK OF SAFETY PRECAUTIONS ARE THE SOLE RESPONSIBILITY OF THE OPERATOR.**

All farm machinery and equipment is potentially dangerous. Careless use of any Arrowquip livestock equipment may cause injury or damage to persons, cattle, or property. Arrowquip has taken precautions in the design and manufacturing of this product to ensure that it is safe and user-friendly. Therefore, user must assume all responsibility and risk associated with the possession and use of the cattle squeeze crush.



**WARNING: READ BELOW BEFORE OPERATION.**

1. Ensure the operator understands the contents of this manual before using the crush trailer.
2. Do not wear loose-fitted clothing.
3. When assembling and disassembling the crush trailer, ensure the parts are located on a firm, level, dry surface which is free of rocks and other trip hazards.
4. Do not make any modifications to Arrowquip equipment. Non-factory modifications to the equipment can reduce the safety for the operator and will void warranty.
5. Maximum speed 50km/30mph.
- 6. Do not tow loaded trailer without strap in place.**
7. DO NOT ALLOW CHILDREN UNDER THE AGE OF 18 TO BE NEAR AN OPERATING MACHINE.

## **Risk Assessment**

Conduct a risk assessment on procedures for which the cattle squeeze crush used and establish a safework procedure.

1. Ensure all users of the equipment have been inducted and comply with safe working procedure.
2. Maintain tire pressure of 80 psi.

3. Check wheel lug nuts after 10, 25, 50 miles of use, ensure torqued to 120 ft. lbs.
  - a. This applies to first time use and wheel change.
4. Ensure that all equipment is securely fastened onto the trailer before moving or connecting to a vehicle.



**WARNING: EXCEEDING THE ABOVE LISTED TORQUE LIMITS CAN DAMAGE STUDS AND/OR NUTS, AND OVER TIME MAY LEAD TO FRACTURES AND DANGEROUS WHEEL SEPARATION.**

## **Operating the Crush Trailer**

1. Make sure safety chain is attached to the vehicle.
2. Ensure all pins and lock clips are in place.
3. Secure chute to the trailer with the strap.
4. Ensure all bolts are properly tightened before and after use.
5. Inspect for possible damage at regular intervals.

## **Trailer Wheel Maintenance**

It is extremely important to apply and maintain proper wheel mounting torque on your trailer wheel. Torque is a measure of the amount of tightening applied to a fastener (nut or bolt) and is expressed as length force. For example, a force of 90 pounds applied at the end of a wrench on foot long will yield 90 ft. lbs. of torque. A torque wrench is the best method to assures the proper amount of torque is being applied to a fastener.

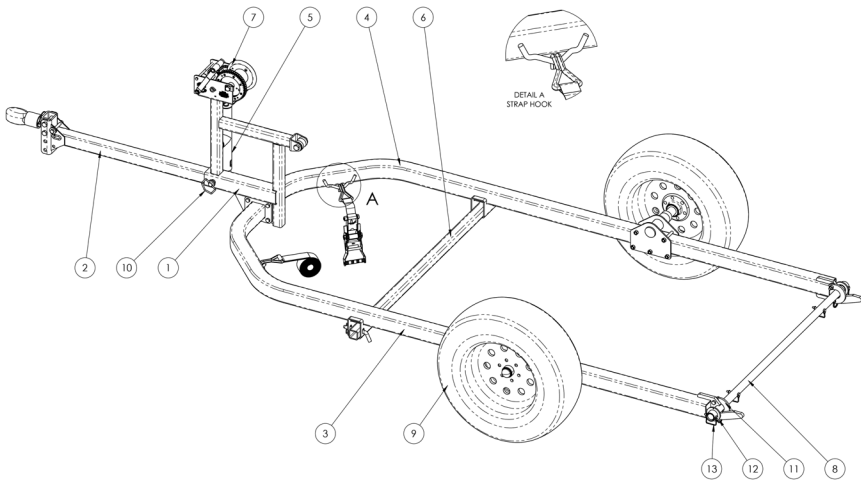
Be sure to use only fasteners matched to the cone angle of your wheel – usually 60° or 90°. The proper procedure for attaching your wheels is as follows:

1. Start all bolts or nuts by hand to prevent cross-threading.
2. Tighten bolts or nuts in the sequence shown for wheel torque requirements.
3. The tightening of the fasteners should be done in stages. Following the recommended sequence, tighten fasteners per wheel torque requirements diagram.
4. Wheel nuts/bolts should be torqued before first road use and after each wheel removal. Check and re-torque after the first 10 miles, 25 miles, and again at 50 miles. Check periodically thereafter.

Maximum torque level that can be safely applied to the studs are: Stud Size: 13mm-20 UNF, class 2A Maximum Torque: 120 ft. lbs.

# Assembly of Crush Trailer

Due to shipping requirements, your crush trailer will not come pre-assembled. The following guide will assist you in assembling your trailer for use.



- 1. TRAILER CENTER MOUNTING
- 2. HITCH
- 3. MAIN RAIL LH
- 4. MAIN RAIL RH
- 5. TRAILER JACK
- 6. CATTLE CRUSH TUBE REST
- 7. WINCH

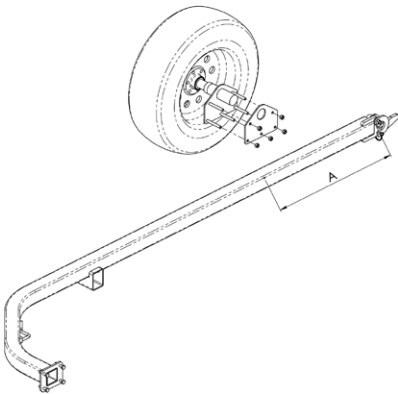
- 8. TRAILER ROD
- 9. WHEEL HUB AND TIRE
- 10. 7/8 X 5' GOLD DROP PINS
- 11. HORSESHOE BRACKET
- 12. ROD CAP
- 13. QUICK-RELEASE PIN



**STEP 1:** Insert wheels as shown. Use supplied nuts and bolts to fix axle to main rail bracket.

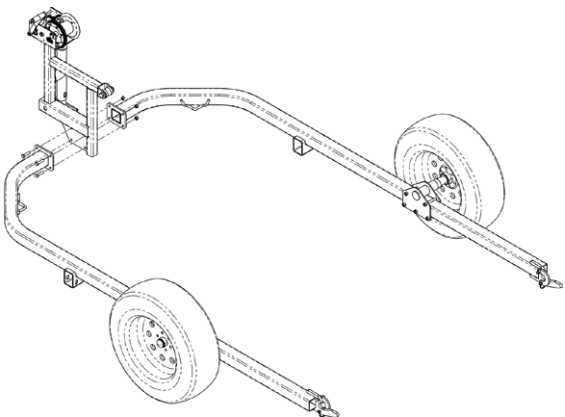
**IMPORTANT NOTE:** Orientation of axle towards rear. This is very important for smooth operation and balancing during operation.

Dimension A: See table below for range of measurements.



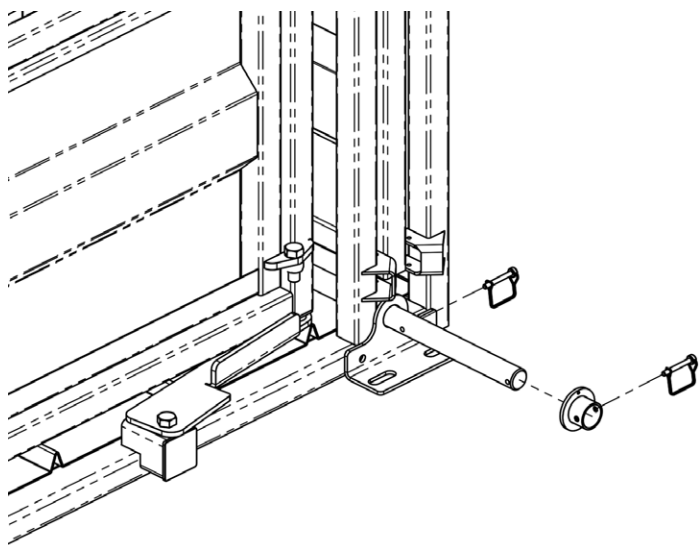
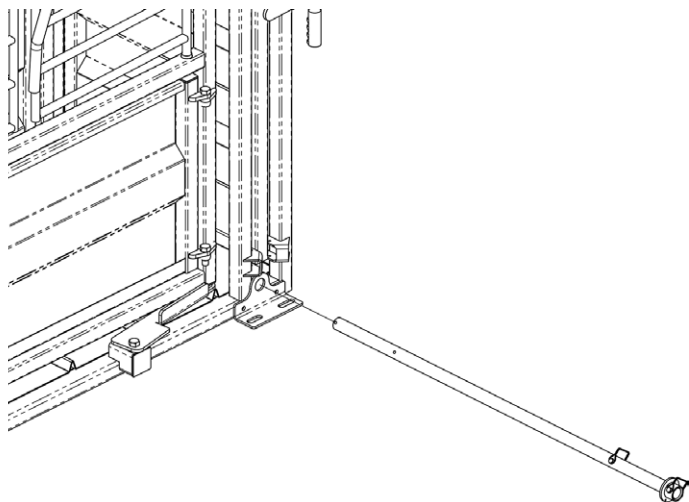
MODEL	MEASUREMENT FROM END OF TUBE TO CENTRE OF SPINDLE
86 SERIES	813mm
106 SERIES	686mm
61 SERIES	870mm

**STEP 2:** Connect both main rails to trailer center, mounting using 4 bolts and 4 nuts. Bolts must be torqued, and should be checked periodically as part of trailer maintenance.



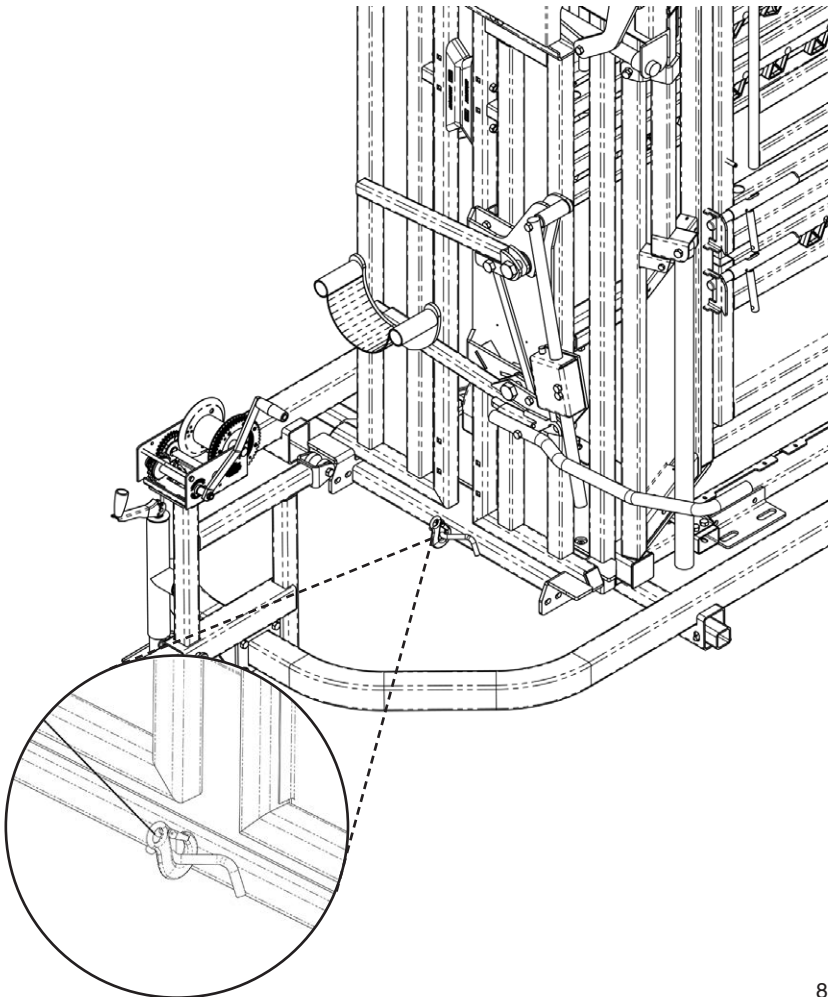
**STEP 3:** Place the rod in before you attach trailer. Place the cap on, then insert two pins. Repeat on the opposite side.

You are now ready to attach your Arrowquip Squeeze Crush.

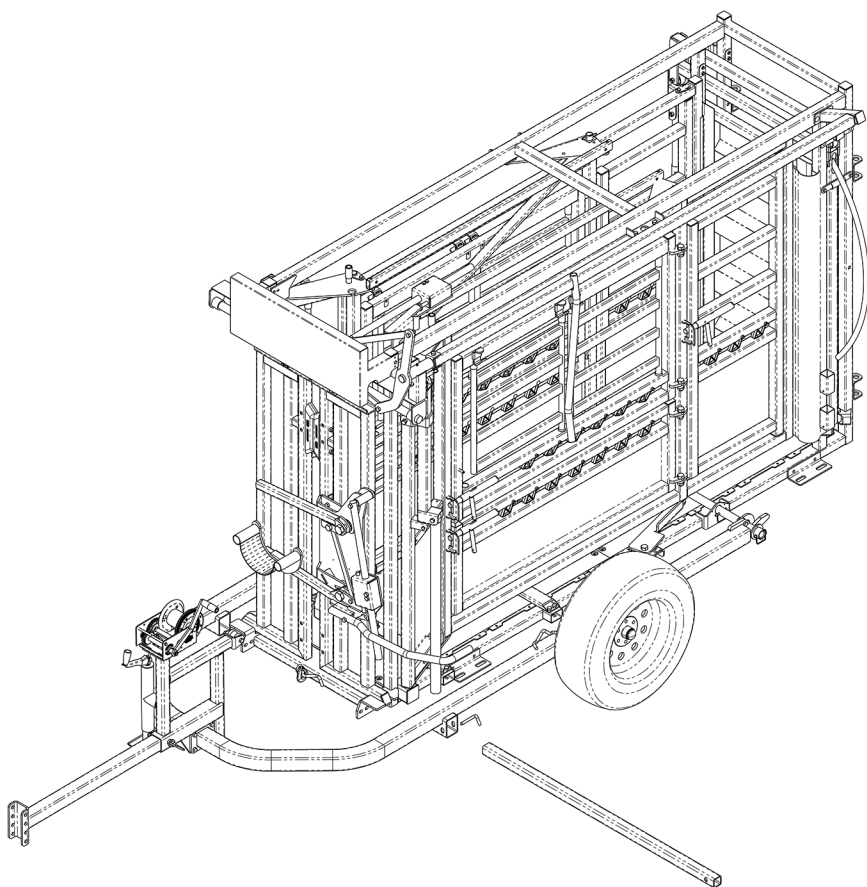


**STEP 4:** Run winch cable over roller and onto chute hook to raise and lower the crush. Use winch handle to raise and lower trailer to suitable position for attaching.

**NOTE:** Trailer rails and crush are not shown for clarity.

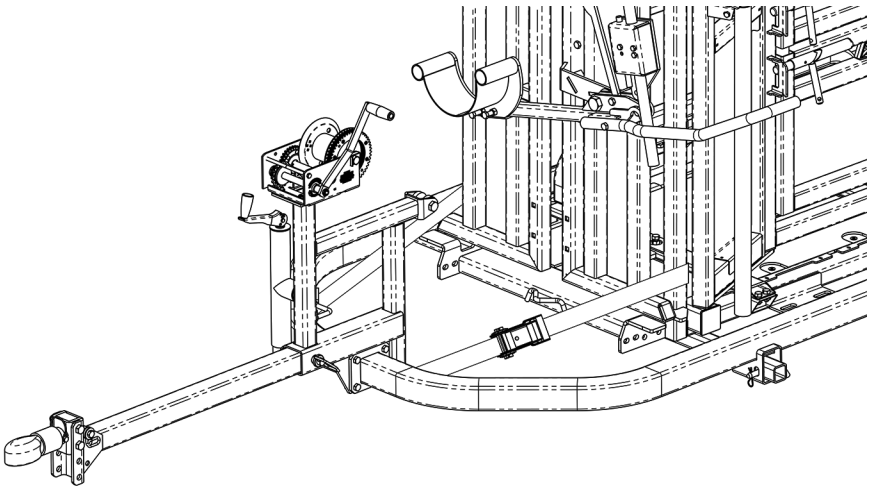


**STEP 5:** Insert crush tube rest as shown below. Insert 13mm pin to fix crush rest tube. Ensure the pin and R-Clip are inserted while towing.



**STEP 6:** Use load strap to secure crush to trailer according to the following instructions.

1. Separate two pieces of ratchet strap.
2. Place strap through the frame of the crush, behind the front 2x2 frame.
  - a. **NOTE:** Do not put the strap directly behind the head bail.  
Over time, this may negatively affect the head bail and cause it to malfunction.
3. Run strap through the needle door on the opposite side of the crush.
4. Reattach ratchet strap pieces.
5. Connect strap hooks onto the front of the trailer.
6. Tighten ratchet strap until crush is securely fitted to the trailer.
7. Tie up any extra length on the strap, so that it is not dragging during towing.



**STEP 7:** Your trailer is now ready to attach to your truck.

You can visit our website and view a video on how to attach your Arrowquip crush at <https://youtu.be/NfPFLZ3V-fE>.

## **Warranty**

**Your product must be registered to claim warranty**, and to ensure that Arrowquip has the required information to contact you in the event of a product or part recall. If the owner of the equipment fails to register the product with Arrowquip, they are considered to have voluntarily voided the warranty.

**NOTE:** Any modification, in any fashion, to any Arrowquip equipment immediately voids the product warranty. This includes the parts contained therein.

E.g. If a modification is made to the squeeze mechanism in a squeeze crush, and the sternum bar is bent afterwards, warranty for the damaged part, the sternum bar, contained in the modified equipment, the squeeze crush, is void. In addition, any remaining warranty for the squeeze crush and other parts contained therein, including, but not limited to, the head bail, locking system, Q-Catch system, and rollers, is null and void.

### **REGISTER FOR WARRANTY NOW:**

**Online:** [arrowquip.com.au](http://arrowquip.com.au)

**Phone:** 1800 814 107 | **Email:** [sales.au@arrowfarmquip.com](mailto:sales.au@arrowfarmquip.com)

## **Troubleshooting Guide**

1. Trailer 'fishtails' when towed.
  - a. Please ensure that axles are properly inserted and facing backwards. See page 6.
2. Rear end drags when crossing uneven ground.
  - a. Ensure that you have the receiver on your vehicle set at the correct height.
3. Crush tips over when winding up the trailer.
  - a. Ensure you load and unload crush on level ground.



**ARROWQUIP**

1800 814 107 | [sales.au@arrowfarmquip.com](mailto:sales.au@arrowfarmquip.com) | [arrowquip.com.au](http://arrowquip.com.au)