

Safety Manual and Assembly Instructions

Bud Flow



ARROWQUIP

Contents

Arrow Farmquip Safety Manual	3
The Law	3
Equipment Maintenance	3
Equipment Modification	3
Personal Protective Equipment	3
Necessary Safety Precautions	4
Tips on Cattle Handling	4-5
Bud Flow Components	6-7
Bud-Flow Site Preparation	8
Bud Flow Assembly Instructions	8-11
Assembly Checklist	12
Warranty	13
Warranty Registration Form	14
Claim Form	15

Arrow Farmquip Safety Manual

It is important that every person who will be involved in using any Arrow Farmquip P/L products has read and understood the precautions / guidelines that are contained in this manual.

The Law

All workplaces are obligated under the relevant Occupational Health and Safety Act to provide safe working conditions for workers, visitors and contractors.

Every work environment is required by law to complete a risk assessment on each and every machine or job sequence at the workplace.

A process needs to be in place to identify any foreseeable hazards that may arise in the workplace and to assess the risk of harm arising from the identified hazards. Employers have an obligation to eliminate the hazards, but if this is not reasonably practicable, they must control the risk by implementing measures to lessen the risk of harm to the lowest possible level.

It is necessary that as per state OH&S legislation you:-

1. Carry out a risk assessment and complete a safe work method statement for the item you have purchased;
2. Train and induct your staff and any operators / workers in the correct, safe work method; and
3. Keep the necessary written records.

Equipment Maintenance

1. Ensure your equipment is in good working condition before using. If in doubt, contact Arrow Farmquip: Freecall 1800 814 107.
2. Do not operate equipment that is broken, worn or unsafe.

Equipment Modification

1. Modifying Arrow Farmquip products without the written consent from Arrow Farmquip P/L will void any Arrow Farmquip P/L warranty and void any responsibility that Arrow Farmquip P/L has for the modified product.
2. If it is considered necessary by Arrow Farmquip P/L to modify a product, such modification must be carried out by a suitably qualified tradesperson.
3. Arrow Farmquip P/L takes no responsibility for any damages occurring as a result of using modified products.

Personal Protective Equipment

You should evaluate what personal protective safety equipment is required when using Arrow Farmquip products.

You should consider if it is necessary to wear:

1. Long sleeved shirts, trousers, or hats for protection from the sun or chemicals;
2. Gloves for hand protection;
3. Glasses for eye protection; and
4. Suitable footwear for foot protection.

Remember that any loose clothing or untied hair could be a hazard.

Take all Necessary Precautions

Whilst handling any livestock it is of first importance to evaluate the best and safest way to handle them. The larger the animal, the greater the risk of injury occurring.

Failure to comply with these safety precautions could result in severe operator injury

Always hold on to the horizontal rail of the force gate with both hands when operating the Bud Flow as shown below:



Do not hold onto any part of the spring loaded locking mechanism on the force gate whilst forcing cattle through the Bud Flow.

Do not place hands on any hinge points/panel junctions whilst operating the Bud Flow.

Use appropriate Personal Protective Equipments while operating Bud Flow.

Failure to install the Bud-Flow on a prepared, level site may compromise the operation and safety features of the product. It is recommended that the Bud-Flow is always operated on a level site – do not operate the product if it is unsafe.

To give you some tips in livestock handling, we have included some basic skills of good stockmanship for cattle that you might be able to use to help in the handling of your livestock.

Tips for Handling of Cattle

- 1. Be patient:** Patience can often avert a problem which could potentially be serious.
- 2. Keep noise to a minimum:** Dogs barking, people yelling, banging things etc tends to only stir cattle up, which in turn increases the risk of danger.
- 3. Do not frighten the animals:** Frightened livestock often move unpredictably. Movements need to be positive, not sudden or jerky so as to frighten them. Isolated animals, or heifers with young calves at foot, often become stressed easily, so move with care when handling these situations.
- 4. Ensure the path ahead is clear:** Cattle can be moved much easier if they can see where the handler wants them to go. Open as many gates as possible so that a wide clear path is clearly visible.

5. Approach from the correct angle: Cattle have approximately 330 degree panoramic vision. Whilst they can easily detect movement around them, they have a relatively narrow binocular or visual field (25 -50 degree) of vision in front of them where they can clearly focus objects. This is the reason cattle usually turn to face the handler. The handler has most control and the greatest likelihood of a successful operation if a beast or mob is approached from behind, at an angle of 45 -60 degrees, to the shoulder of the animal you wish to move,

6. Don't crowd cattle: You need room to be able to work cattle safely and to stay out of their kicking range.



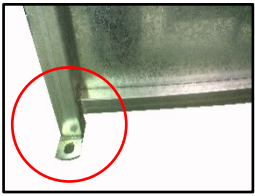

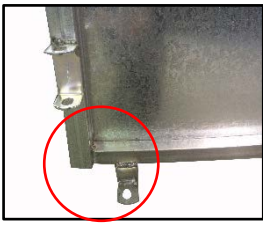

7. Encourage stock to string out: Once cattle start to move do not force them, rather aim to have a steady flow, by standing or moving to a position to encourage this.



8. Working in a Crush: Make sure the animal is suitably restrained before carrying out any husbandry chores. Use the facilities you have on your crush to achieve this, head bail, chin bar or head holder, side squeeze, ratchet rump bar etc. If you place your hands or arms inside the crush with the animal, make sure you have ample room to move (open the necessary gates but don't lose suitable control of the animal) so if the animal quickly changes position you will not damage or crush your hands or arms.

9. Working site: It is advisable to have a well drained site so as to not work in muddy conditions which can become hard to work in and dangerous.

Acknowledgements - Farm Cattle Handling CSIRO Publications; Cattle Handling- Workplace Health & Safety Queens-Land; <http://www.deir.qld.gov.au/workplace/subjects/rural/animal/cattle/index.htm> 19/11/2009; National Ag Safety Database – Farm Safety Camp Manual Page; <http://nasdonLine.org/document/23/Livestock/d000155/farm-safety-camp-manual.html> 19/11/2009.

Product Components

Item	Description	Picture	Qty
1	Gate Frame		x1
2	Curved Panel	 	x5- for Full Bud Flow x4 - for Four Section Bud Flow x3- for Three Section Bud Flow x2- for Two Section Bud Flow NOTE: All Curved Panel sections have ground lugs in-line with panel edge as shown left.
3	End Panel	 	x1 NOTE: End Panel section has ground lug inset from the panel edge as shown left.
4	Bracing Bars – (Overhead and Ground)		x6 - Full Bud Flow (x5 overhead, x1 ground) x5 - Four Section Bud Flow (x4 overhead, x1 ground) x4 - Three Section Bud Flow (x3 overhead, x1 ground) x3 - Two Section Bud Flow (x2 overhead, x1 ground)

5	Bracing Bar Bull Clips		<p>x6 - Full Bud Flow (x5 overhead, x1 ground) x5 - Four Section Bud Flow (x4 overhead, x1 ground) x4 - Three Section Bud Flow (x3 overhead, x1 ground) x3 - Two Section Bud Flow (x2 overhead, x1 ground)</p>
6	Joining Pins		<p>x12 - Full Bud Flow x10 - Four Section Bud Flow x8 - Three Section Bud Flow x6 - Two Section Bud Flow</p>

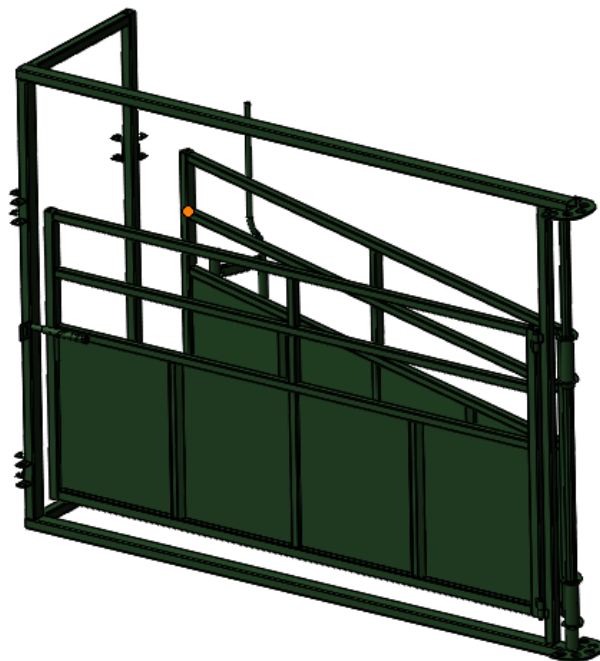
Site Preparation

PLEASE NOTE: It is recommended for best results the installation site is level. A minimum 6m diameter area is required for a 5 section Bud Flow – failure to prepare the installation site may compromise the operation and safety features of the product and hinder the installation process.

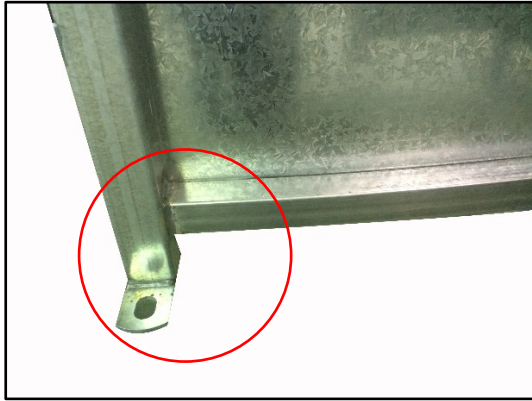
Failure to install the Bud-Flow on a prepared, level site will void any applicable warranty.
Any questions please call 1800 814 107.

Assembly Instructions

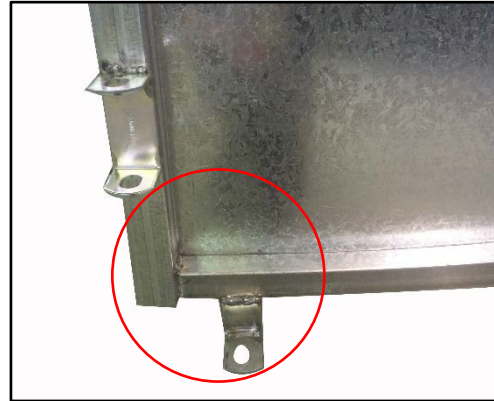
1. Begin with the gate frame section as shown below. The cattle will exit the Bud Flow via the race gateway frame on the left.



2. Identify the Curved Panel Sections from the End Panel Section, see detailed below, place the End Panel section aside.

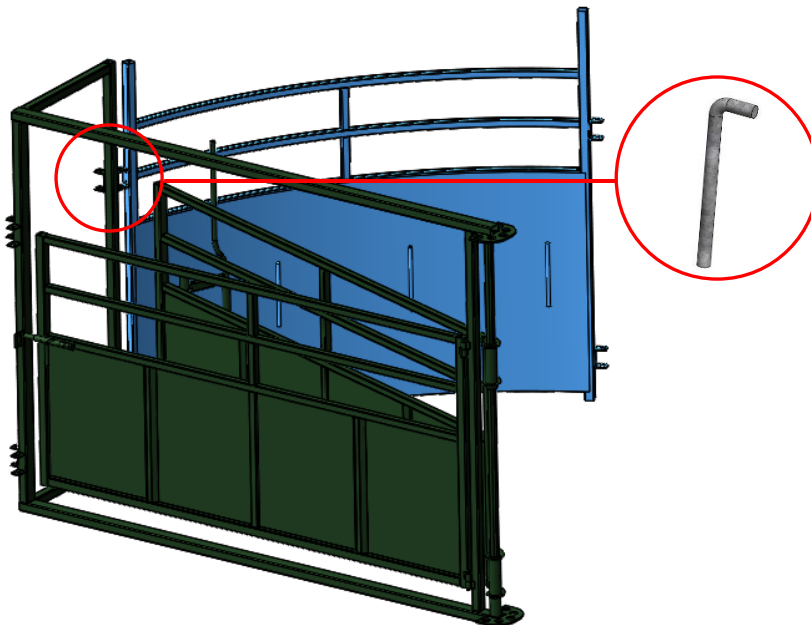


Curved Panel Section

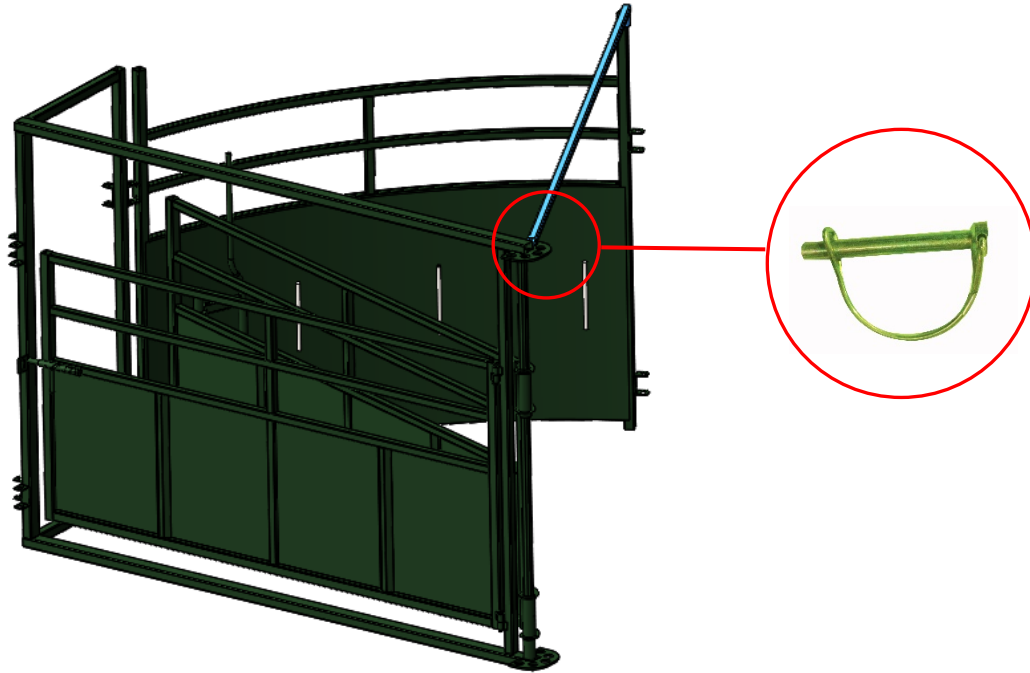


End Panel Section

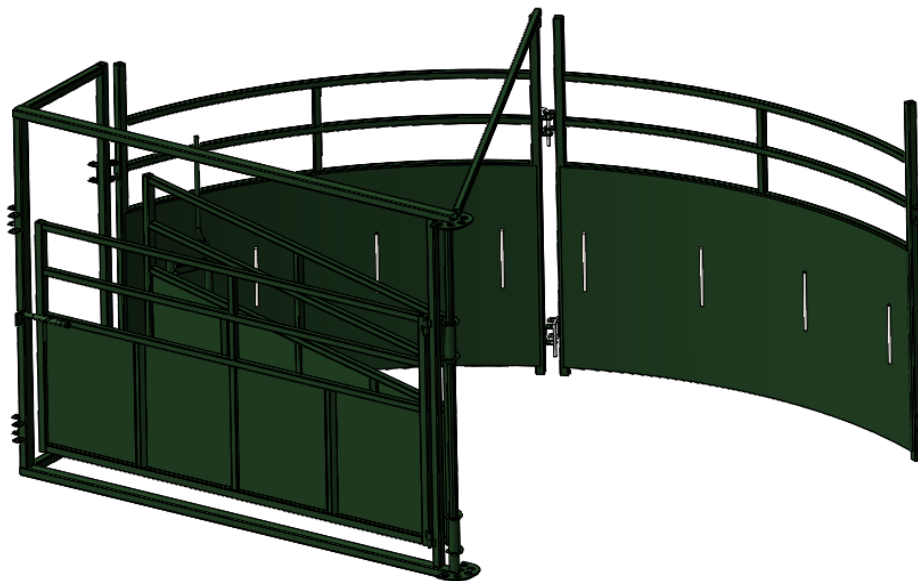
3. Place the first Curved panel next to the race gate frame
4. Join them together by inserting the joining pins through the lugs top and bottom
– a double lug should always join a single lug.



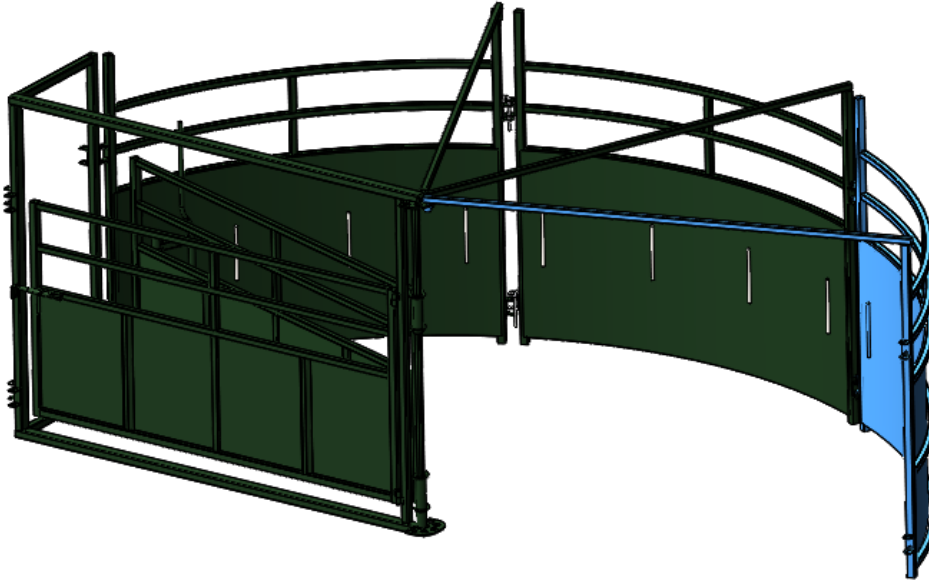
5. Attach the first overhead bracing bar between the centre post and the curved panel. Secure this at the centre post with a bracing bar bull clip as illustrated below.



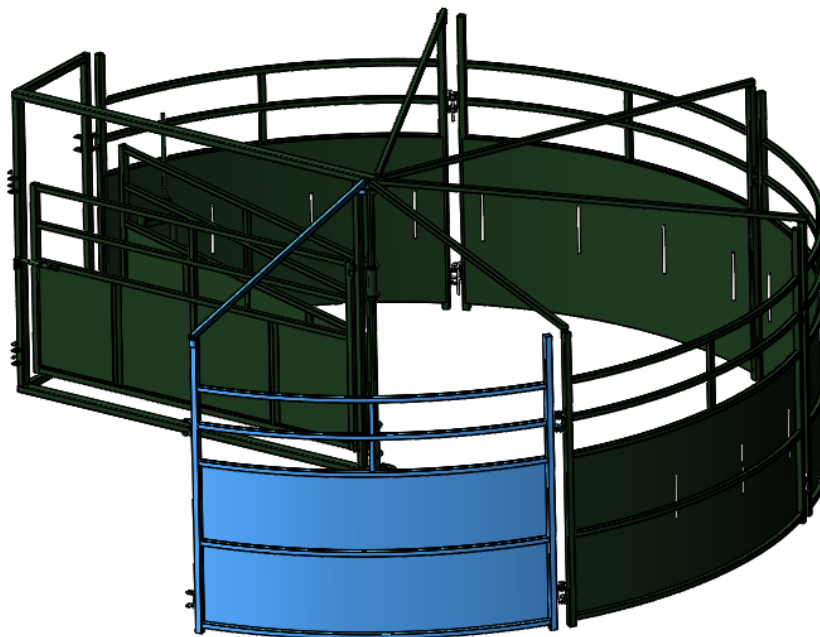
6. Attach the second curved panel section, repeating steps 4 and 5.



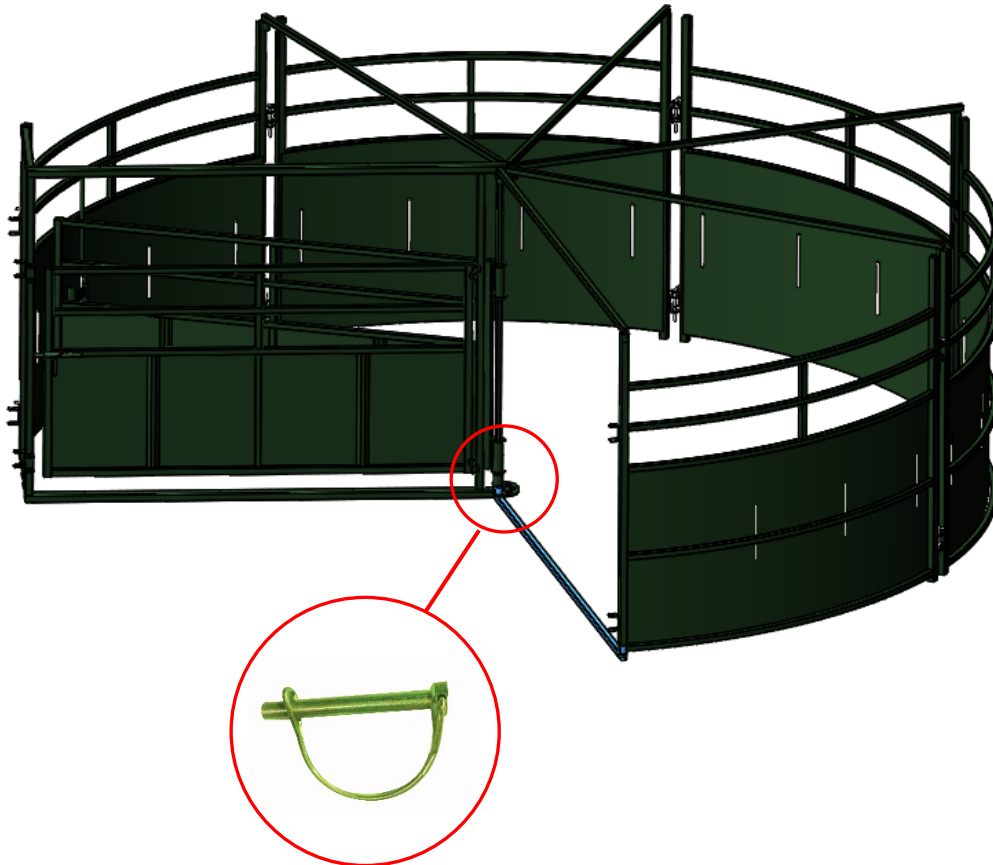
7. Attach the third curved panel section, repeating steps 4 and 5.



8. Attach the fourth and the fifth curved panel sections, repeating steps 4 and 5.



9. Once the last **curved panel section** is installed, attach the **ground bracing bar** as shown. The **ground bracing bar** is always attached to the **last curved section** across all models: 2, 3, 4 or 5 section Bud-Flows.



CHECKLIST

Please check all componentry and operation prior to working stock.

Failure to do so may result in serious operator injury

- ☐ All panel joining pins in place
- ☐ All overhead bracing bars and bull clips in place
- ☐ Ground bracing bar & bull clip in place
- ☐ Check force gate locking mechanism engages at each braking point

WARRANTY INFORMATION

Important Information

Our goods come with guarantees that cannot be excluded under the Australian Consumer Law. You are entitled to a replacement or refund for a major failure and compensation for any other reasonably foreseeable loss or damage. You are also entitled to have the goods repaired or replaced if the goods fail to be of acceptable quality and the failure does not amount to a major failure.

Please note: The benefits provided by the warranty are in addition to other rights and remedies you are entitled to by law in relation to the product to which the warranty relates.

In addition to the guarantees provided under the Australian Consumer Law, Arrow Farmquip products are guaranteed against defective workmanship for twelve months from date of purchase.

The following products are covered by 3 and 5 year warranties respectively:

Five years:-

- Q-Catch Crush Range or Headbail
- Hydraulic Hydra Squeeze Crush Range

Three Years:-

CowCatcher Crush

One Year – Applicable to all other products

Arrow Farmquip warranty is limited to repair of product (or if necessary) replacement of product.

Modified Products Not Covered

Modified products are not covered by Arrow Farmquip Product warranty unless you have permission in writing from Arrow Farmquip.

Extended Warranty Available

Extended warranty is available. Please ask us and one of our customer service agents will come back with a quote.

How to Activate your Warranty

A warranty registration must be completed to validate your full warranty. Please complete the attached Registration Form and return the completed form to:

Free Post to Arrow Farmquip P/L Reply Paid Box 40 Tamworth NSW 2340 or email
sales.au@arrowfarmquip.com

The Registration Form can also be filled out on our website www.arrowfarmquip.com.au

How to claim under your warranty

If you wish to make a claim under your warranty, please complete the attached Claim Form and return the completed form to:

Free Post to Arrow Farmquip P/L Reply Paid Box 40 Tamworth NSW 2340 or email
sales.au@arrowfarmquip.com

Copies of the Claim Form are also available on our website www.arrowfarmquip.com.au

Cost of Assessing a Claim

If a repair technician visits to assess a warranty claim and finds the defect is due to misuse or normal wear and tear, you will be responsible for paying the costs associated with assessing the claim including any freight charges incurred.

We note that expenses you may incur in making a claim are not recoverable from Arrow Farmquip.

REGISTRATION FORM

Personal Details

Name
Postal Address
Phone
Email

**I would like to register the following Arrow Farmquip
product/s:.....**

Product Purchased from:

Dealer / Company
Town
Date Purchased
Serial No: (if known)

Warranty Periods (please tick)

5 Year Warranty on my Q Catch Crush or Headbail
3 Year Warranty on my Cowcatcher Crush
1 Year Warranty on other products

POST: Box 40 Tamworth NSW 2340
EMAIL: sales.au@arrowfarmquip.com

CLAIM FORM

Personal Details

Name
Postal Address
Phone
Email

Description of product/s:.....

Product Purchased from:

Dealer / Company
Town
Date Purchased
Serial No: (if known)

Claim Details

Please briefly describe the nature of the defect being claimed:

.....
.....
.....
.....
.....
.....
.....

POST: Box 40 Tamworth NSW 2340
EMAIL: sales.au@arrowfarmquip.com