

Safety Manual and Assembly Instructions

Q-Race



ARROWQUIP

Contents

Arrowquip Safety Manual	3
The Law	3
Equipment Maintenance	3
Equipment Modification	3
Personal Protective Equipment	3
Necessary Safety Precautions	4
Tips on Cattle Handling	4-5
Q-Race Components	6-7
Q-Race Site Preparation	8
Q-Race Assembly Instructions	8-11
Assembly Checklist	12
Warranty	13
Warranty Registration Form	14
Claim Form	15

Arrow Farmquip Safety Manual

It is important that every person who will be involved in using any Arrow Farmquip P/L products has read and understood the precautions / guidelines that are contained in this manual.

The Law

All workplaces are obligated under the relevant Occupational Health and Safety Act to provide safe working conditions for workers, visitors and contractors.

Every work environment is required by law to complete a risk assessment on each and every machine or job sequence at the workplace.

A process needs to be in place to identify any foreseeable hazards that may arise in the workplace and to assess the risk of harm arising from the identified hazards. Employers have an obligation to eliminate the hazards, but if this is not reasonably practicable, they must control the risk by implementing measures to lessen the risk of harm to the lowest possible level.

It is necessary that you:-

1. Carry out a risk assessment and complete a safe work method statement for the item you have purchased;
2. Train and induct your staff and any operators / workers in the correct, safe work method; and
3. Keep the necessary written records.

Equipment Maintenance

1. Ensure your equipment is in good working condition before using. If in doubt, contact Arrow Farmquip: Freecall 1800 814 107.
2. Do not operate equipment that is broken, worn or unsafe.

Equipment Modification

1. Modifying Arrow Farmquip products without the written consent from Arrow Farmquip P/L will void any Arrow Farmquip P/L warranty and void any responsibility that Arrow Farmquip P/L has for the modified product.
2. If it is considered necessary by Arrow Farmquip P/L to modify a product, such modification must be carried out by a suitably qualified tradesperson.
3. Arrow Farmquip P/L takes no responsibility for any damages occurring as a result of using modified products.

Personal Protective Equipment

You should evaluate what personal protective safety equipment is required when using Arrow Farmquip products.

You should consider if it is necessary to wear:

1. Long sleeved shirts, trousers, or hats for protection from the sun or chemicals;
2. Gloves for hand protection;
3. Glasses for eye protection; and
4. Suitable footwear for foot protection.

Remember that any loose clothing or untied hair could be a hazard.

Take all Necessary Precautions

Whilst handling any livestock it is of first importance to evaluate the best and safest way to handle them. The larger the animal, the greater the risk of injury occurring.

Failure to comply with these safety precautions could result in severe operator injury



BASE SHAFT & END CAP TEK SCREWS

Ensure a Tek screw is secured at each end of both base shafts.

Ensure 3 Tek screws are secured into each end cap of both base shafts. Failure to secure these tek screws will compromise the stability of the side panels and may compromise the operation and safety features of the product.

RELEASING SLAM LATCHES FOR EMERGENCY EXIT OF AN ANIMAL

In the event an animal goes down in the Q-Race and an emergency exit is required it is critical to ensure the area where the Q-Race panel will drop is clear of any operators or stock. Ensure the slam latch is released from the **OPPOSITE SIDE** to ensure you avoid injury. **DO NOT ATTEMPT** to stand on the same side whilst releasing the slam latches under any circumstance.

Use appropriate Personal Protective Equipments while operating Q-Race.

Failure to install the Q-Race on a prepared, level site may compromise the operation and safety features of the product. It is recommended that the Q-Race is always operated on a level site – do not operate the product if it is unsafe.



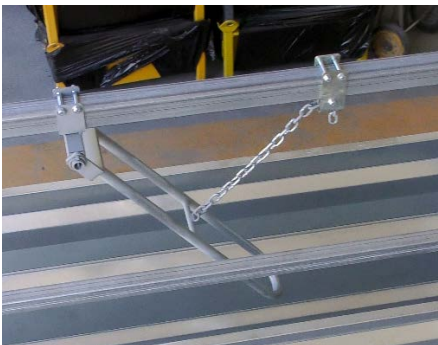
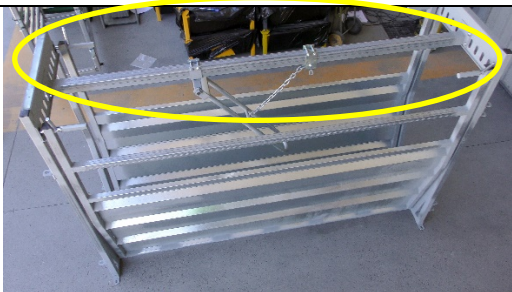
To give you some tips in livestock handling, we have included some basic skills of good stockmanship for cattle that you might be able to use to help in the handling of your livestock.




Tips for Handling of Cattle

- 1. Be patient:** Patience can often avert a problem which could potentially be serious.
- 2. Keep noise to a minimum:** Dogs barking, people yelling, banging things etc tends to only stir cattle up, which in turn increases the risk of danger.
- 3. Do not frighten the animals:** Frightened livestock often move unpredictably. Movements need to be positive, not sudden or jerky so as to frighten them. Isolated animals, or heifers with young calves at foot, often become stressed easily, so move with care when handling these situations.
- 4. Ensure the path ahead is clear:** Cattle can be moved much easier if they can see where the handler wants them to go. Open as many gates as possible so that a wide clear path is clearly visible.
- 5. Approach from the correct angle:** Cattle have approximately 330 degree panoramic vision. Whilst they can easily detect movement around them, they have a relatively narrow binocular or visual field (25 -50 degree) of vision in front of them where they can clearly focus objects. This is the reason cattle usually turn to face the handler. The handler has most control and the greatest likelihood of a successful operation if a beast or mob is approached from behind, at an angle of 45 -60 degrees, to the shoulder of the animal you wish to move,
- 6. Don't crowd cattle:** You need room to be able to work cattle safely and to stay out of their kicking range.
- 7. Encourage stock to string out:** Once cattle start to move do not force them, rather aim to have a steady flow, by standing or moving to a position to encourage this.
- 8. Working in a Crush:** Make sure the animal is suitably restrained before carrying out any husbandry chores. Use the facilities you have on your crush to achieve this, head bail, chin bar or head holder, side squeeze, ratchet rump bar etc. If you place your hands or arms inside the crush with the animal, make sure you have ample room to move (open the necessary gates but don't lose suitable control of the animal) so if the animal quickly changes position you will not damage or crush your hands or arms.
- 9. Working site:** It is advisable to have a well drained site so as to not work in muddy conditions which can become hard to work in and dangerous.

Acknowledgements - Farm Cattle Handling CSIRO Publications; Cattle Handling- Workplace Health & Safety Queens-Land; <http://www.deir.qld.gov.au/workplace/subjects/rural/animal/cattle/index.htm> 19/11/2009; National Ag Safety Database – Farm Safety Camp Manual Page; <http://nasdonLine.org/document/23/Livestock/d000155/farm-safety-camp-manual.html> 19/11/2009.

Product Components

Item	Description	Picture	Qty
1	Side Panels		X2
2	End Frame		X2
3	Anti-Backing Bar (optional) Bracket & Bolts		x1 Anti-Backing Bar x1 Bracket x 4 bolts
4	Overhead bar		X1 frame X8 bolts

5	Tek Screws		X4 for base shaft X9 for end caps
6	Plastic Caps		X 8
7	Slam Latch shafts, handles & Springs		X4 springs X4 handles X4 shafts

8	End Caps		X4

Site Preparation

PLEASE NOTE: It is recommended for best results the installation site is level. Failure to prepare the installation site may compromise the operation and safety features of the product and hinder the installation process.

Failure to install the Q-Race on a prepared, level site will void any applicable warranty.
Any questions please call 1800 814 107.

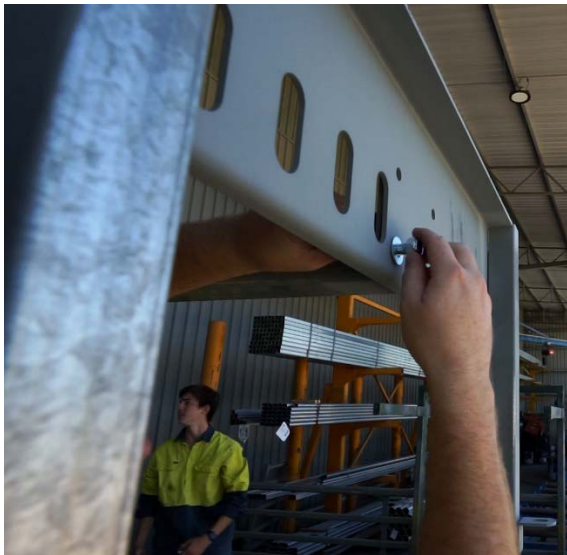
Assembly Instructions

1. Begin by positioning the side panels opposite each other. Stand the end frame into position.





2. Next slide end frames into position, ensuring the base shaft goes through each hole located at the bottom of each end frame.
3. Attach the Overhead bar– place into position and secure with bolts on each end.



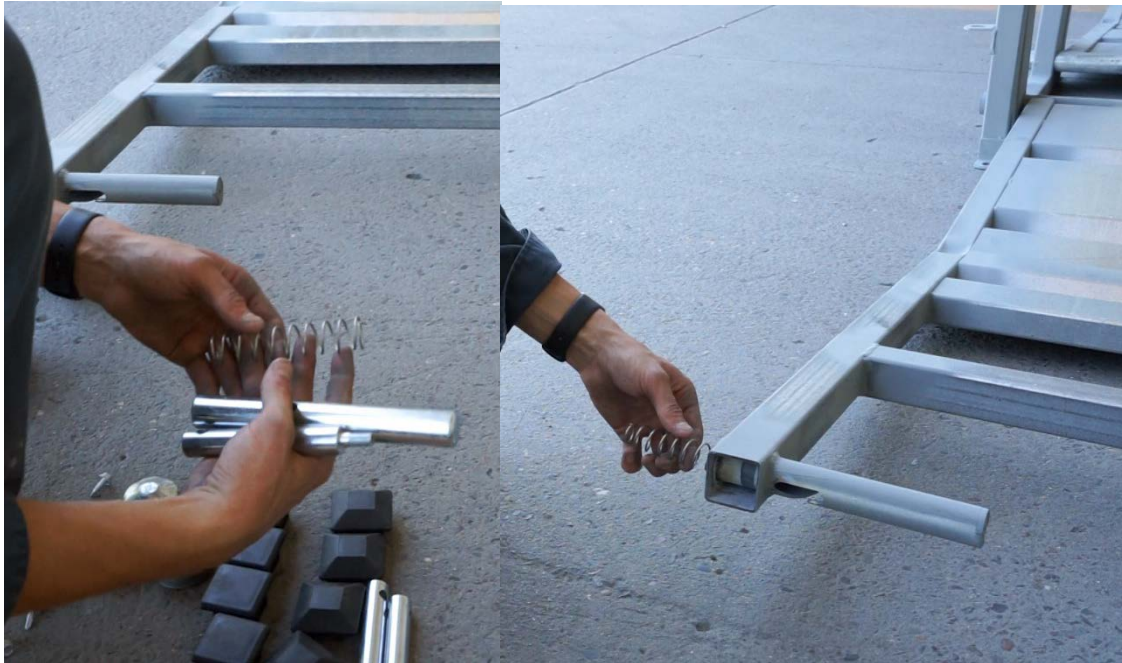
4. Ensure the gap between the frame and the side panel is even. Secure a tek screw on the inside of the base shaft as illustrated, repeat this on all 4 ends.



5. Attach metal end cap to base shaft as illustrated, secure with 3 tek screws as shown. Repeat on all 4 ends.



Installing the Slam Latches, locate a spring, shaft and handle. Place the spring inside the hole first followed by the shaft.



Screw the handle in place by hand and tighten using screwdriver as shown. Repeat for all 4 Slam Latches

Attach the plastic caps on all RHS uprights, use a rubber mallet if required.

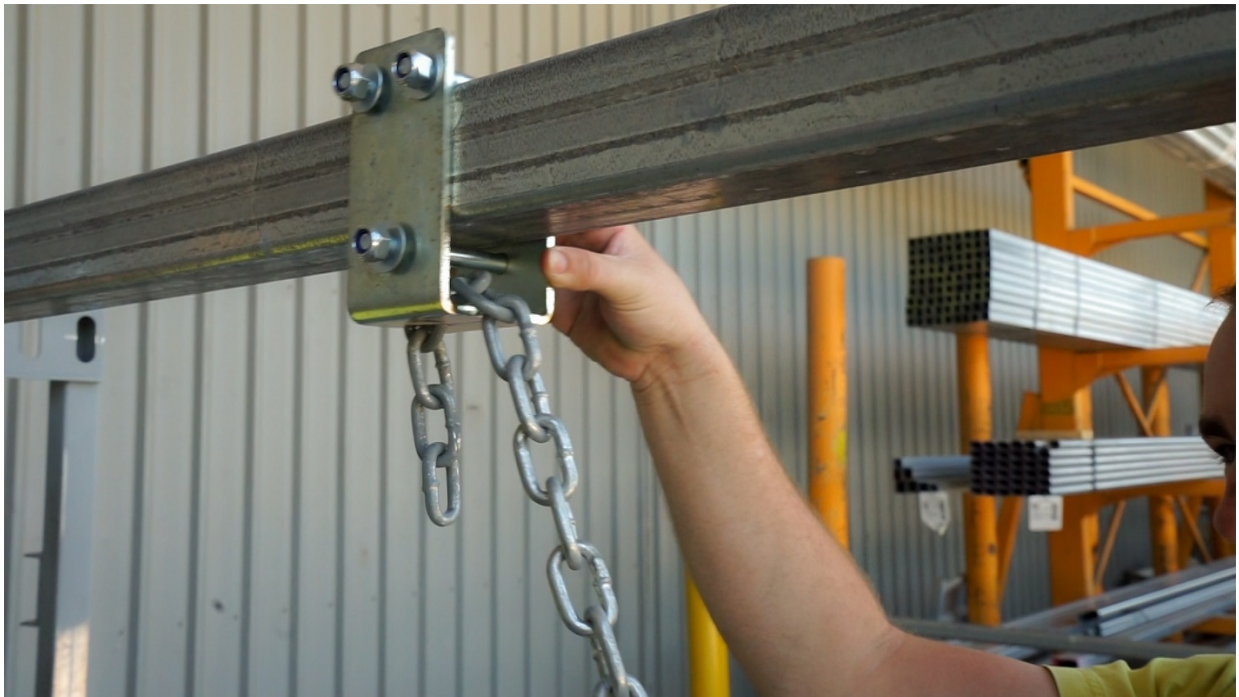


ANTI-BACKING BAR (Optional Accessory)

Attach unit as illustrated to the overhead brace and secure in place with bolts



Attach the chain bracket, secure in place with bolts.



Thread the height adjusting chain through the bracket and secure at the desired height (the anti-backing bar should be high enough for the cattle to bob under but low enough so that it drops in behind their rump as they pass) This can be positioned anywhere along the overhead bar to suit.



CHECKLIST

Please check all componentry and operation prior to working stock.

Failure to do so may result in serious operator injury

- ☐ **All tek screws are in place including end caps secured**
- ☐ **Overhead bar in position and secured**
- ☐ **All slam latches installed**
- ☐ **All plastic capping installed**

WARRANTY INFORMATION

Important Information

Our goods come with guarantees that cannot be excluded under the Australian Consumer Law. You are entitled to a replacement or refund for a major failure and compensation for any other reasonably foreseeable loss or damage. You are also entitled to have the goods repaired or replaced if the goods fail to be of acceptable quality and the failure does not amount to a major failure.

Please note: The benefits provided by the warranty are in addition to other rights and remedies you are entitled to by law in relation to the product to which the warranty relates.

In addition to the guarantees provided under the Australian Consumer Law, Arrow Farmquip products are guaranteed against defective workmanship for twelve months from date of purchase.

The following products are covered by 3 and 5 year warranties respectively:

Five years:-

- **Q-Catch Crush Range or Headbail**
- **Hydraulic Hydra Squeeze Crush Range**

Three Years:-

CowCatcher Crush

One Year – Applicable to all other products

Arrow Farmquip warranty is limited to repair of product (or if necessary) replacement of product.

Modified Products Not Covered

Modified products are not covered by Arrow Farmquip Product warranty unless you have permission in writing from Arrow Farmquip.

Extended Warranty Available

Extended warranty is available. Please ask us and one of our customer service agents will come back with a quote.

How to Activate your Warranty

A warranty registration must be completed to validate your full warranty. Please complete the attached Registration Form and return the completed form to:

Free Post to Arrow Farmquip P/L Reply Paid Box 40 Tamworth NSW 2340 or email sales.au@arrowfarmquip.com

The Registration Form can also be filled out on our website www.arrowfarmquip.com.au

How to claim under your warranty

If you wish to make a claim under your warranty, please complete the attached Claim Form and return the completed form to:

Free Post to Arrow Farmquip P/L Reply Paid Box 40 Tamworth NSW 2340 or email
sales.au@arrowfarmquip.com

Copies of the Claim Form are also available on our website www.arrowfarmquip.com.au

Cost of Assessing a Claim

If a repair technician visits to assess a warranty claim and finds the defect is due to misuse or normal wear and tear, you will be responsible for paying the costs associated with assessing the claim including any freight charges incurred.

We note that expenses you may incur in making a claim are not recoverable from Arrow Farmquip.

REGISTRATION FORM

Personal Details

Name
Postal Address
Phone
Email

I would like to register the following Arrow Farmquip

product/s:.....

Product Purchased from:

Dealer / Company
Town
Date Purchased
Serial No: (if known)

Warranty Periods (please tick)

5 Year Warranty on my Q Catch Crush or Headbail
3 Year Warranty on my Cowcatcher Crush
1 Year Warranty on other products

POST: Box 40 Tamworth NSW 2340

EMAIL: sales.au@arrowfarmquip.com

CLAIM FORM

Personal Details

Name
Postal Address
Phone
Email

Description of product/s:.....

Product Purchased from:

Dealer / Company
Town
Date Purchased
Serial No: (if known)

Claim Details

Please briefly describe the nature of the defect being claimed:
.....
.....
.....
.....
.....
.....
.....

POST: Box 40 Tamworth NSW 2340
EMAIL: sales.au@arrowfarmquip.com